

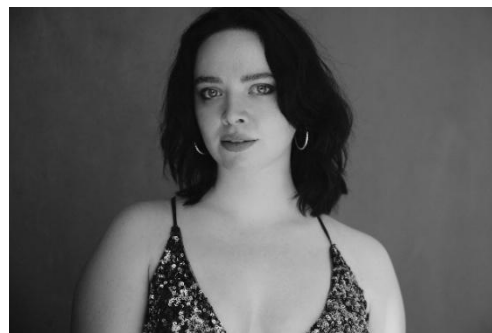
# Libby Sokolowski

dramatic soprano

[libbysokolowski.com](http://libbysokolowski.com)

General Management // Artists Management Zurich

Louis Chanson // [chanson@artistsman.com](mailto:chanson@artistsman.com) +41 44 821 89 57



COLLECTED PRESS // SIEGLINDE DEBUT, Opéra de Monte-Carlo  
english, translated from original languages

"[T]he very young Libby Sokolowski creates a monumental Sieglinde. The Sokolowskis are a family touched by the grace of the God of music. In the second and third acts, her voice became pure adrenaline with soaring high notes and a demonstration of power and vocal projection that foreshadows the birth of a great diva." —*Lohengrin Magazin*

"Libby Sokolowski, with her rich, full-bodied timbre, is a vocally very solid and scenically captivating Sieglinde. The soprano displays a broad line that expands with a wealth of harmonics. The artist pays particular attention to phrasing, counterpointed with intensity and effectiveness." —*OperaLibera*

"As one of the Wälsung twins, 25-year-old American soprano Libby Sokolowski has the presence and vocal volume needed to win over the audience. The performance offers some beautiful moments and some successful risk-taking, with the soprano treating us to a beautifully crafted theme of redemption through love at the beginning of Act III. Without a doubt, she is a performer to watch." —*Première Loge*

"A powerful and intense performer as Sieglinde, Libby Sokolowski is definitely an artist to watch closely." —*Forum Opéra*

"Vocally, American soprano Libby Sokolowski's Sieglinde impresses with a rich, full voice and remarkable projection. We are all the more impressed given that the artist is only twenty-five years old (!) and is already tackling extremely demanding roles, such as Elvira in Ernani, Lady Macbeth in Macbeth, Tosca and even Amneris in Aida! Meanwhile, in her great solo of despair, "Where are you, Siegmund?," Libby Sokolowski (Sieglinde) displays a voice as sumptuous as it is moving, developing her character with equal measures of intelligence and sensitivity as the drama unfolds." —*Résonances Lyriques*

"Libby Sokolowski's Sieglinde moves the audience with the intensity of her singing and her presence." —*Classique News*

"Swedish tenor Joachim Bäckström and American soprano Libby Sokolowski portray the Wälsung twins with passion and sensitivity, forging a convincing emotional connection. Sokolowski's powerful soprano, already heard in Turandot and Lady Macbeth, is thrilling." —*Plays To See*

"Libby Sokolowski gives a touching performance as Sieglinde." —*Crescendo Magazine*

"Soprano Libby Sokolowski and tenor Joachim Bäckström gave moving performances as the doomed incestuous lovers Sieglinde and Siegmund." —*OperaWire*

## original languages

"[T]he very young Libby Sokolowski creates a monumental Sieglinde. The Sokolowskis are a family touched by the grace of the God of music. In the second and third acts, her voice became pure adrenaline with soaring high notes and a demonstration of power and vocal projection that foreshadows the birth of a great diva." —*Lohengrin Magazin*

«Libby Sokolowski, dal timbro pastoso e pieno, è una Sieglinde vocalmente solidissima e scenicamente toccante. Il soprano sfoggia una linea ampia e che si espande, poi, con ricchezza di armonici. Particolare attenzione viene riposta dall'artista al fraseggio, contrappuntato con intensità ed efficacia.» —*OperaLibera*

« En jumeaux Wälsung, la soprano américaine de vingt-cinq ans Libby Sokolowski possède l'abattage et le volume vocal adéquat pour emporter l'adhésion. La suite nous réserve de très beaux moments et une prise de risques maximale et réussie, au début de l'acte III, la soprano nous gratifiant d'un thème de la rédemption par l'Amour de belle facture. Sans nul doute une interprète à suivre. »  
—*Première Loge*

„[...] et intense interprète de Sieglinde, Libby Sokolowski est assurément une artiste qu'il faudra suivre de près.“ — *Forum Opéra*

« Sur le plan vocal, la Sieglinde de la soprano américaine Libby Sokolowski impressionne par une voix charnue, ample et remarquablement projetée. On reste d'autant plus admiratif que l'artiste n'a que vingt-cinq ans (!) et qu'elle aborde déjà des rôles d'une extrême exigence, comme Elvira dans Ernani, Lady Macbeth dans Macbeth, Tosca et même Amnérís dans Aïda ! Tandis que dans son grand solo du désespoir « Wo bist du, Siegmund ? » Libby Sokolowski (Sieglinde), déploie une voix aussi somptueuse qu'émouvante faisant avec autant d'intelligence que de sensibilité évoluer son incarnation au fil de la progression dramatique de l'ouvrage. »  
—*Résonances Lyriques*

« La Sieglinde de Libby Sokolowski touche par l'intensité de son chant et de sa personne. » —*Classique News*

“Swedish tenor Joachim Bäckström and American soprano Libby Sokolowski portray the Wälsung twins with passion and sensitivity, forging a convincing emotional connection. Sokolowski's powerful soprano, already heard in Turandot and Lady Macbeth, is thrilling.” —*Plays To See*

« Libby Sokolowski offre une Sieglinde touchante. » —*Crescendo Magazine*

“Soprano Libby Sokolowski and tenor Joachim Bäckström gave moving performances as the doomed incestuous lovers Sieglinde and Siegmund.” —*OperaWire*